



Deltares is an independent institute for applied research in the field of water and subsurface
<https://www.deltares.nl/en>

Remote sensing of water quality

Marieke Eleveld, Miguel Dionisio Pires
en collega's

Detecting plastics in a hydrodynamic test facility with remote sensing monitoring techniques

Samenwerking met: ESA, TUDelft, ITC Twente, Universiteit Leiden, Universiteit Oldenburg (Duitsland), Universiteit Stirling (Schotland), Universiteit Catalunya (Spanje), Universiteit Lissabon (Portugal)

[Link naar trailer over het project \(2min\)](#)

De Fockert e.a., 2024. Sci Rep, <https://doi.org/10.1038/s41598-024-74332-5>

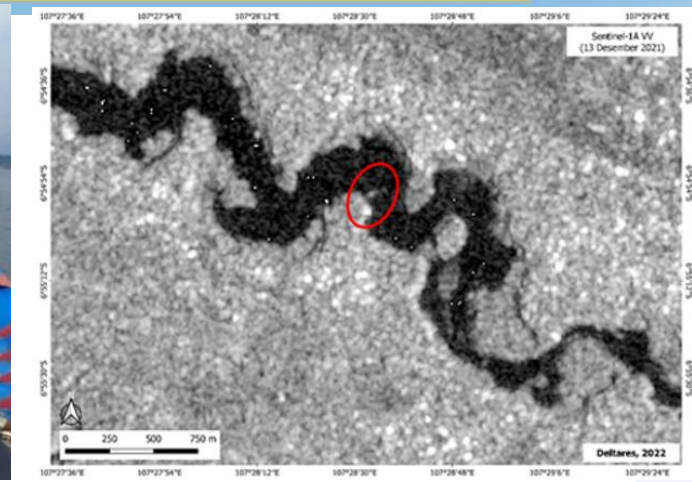
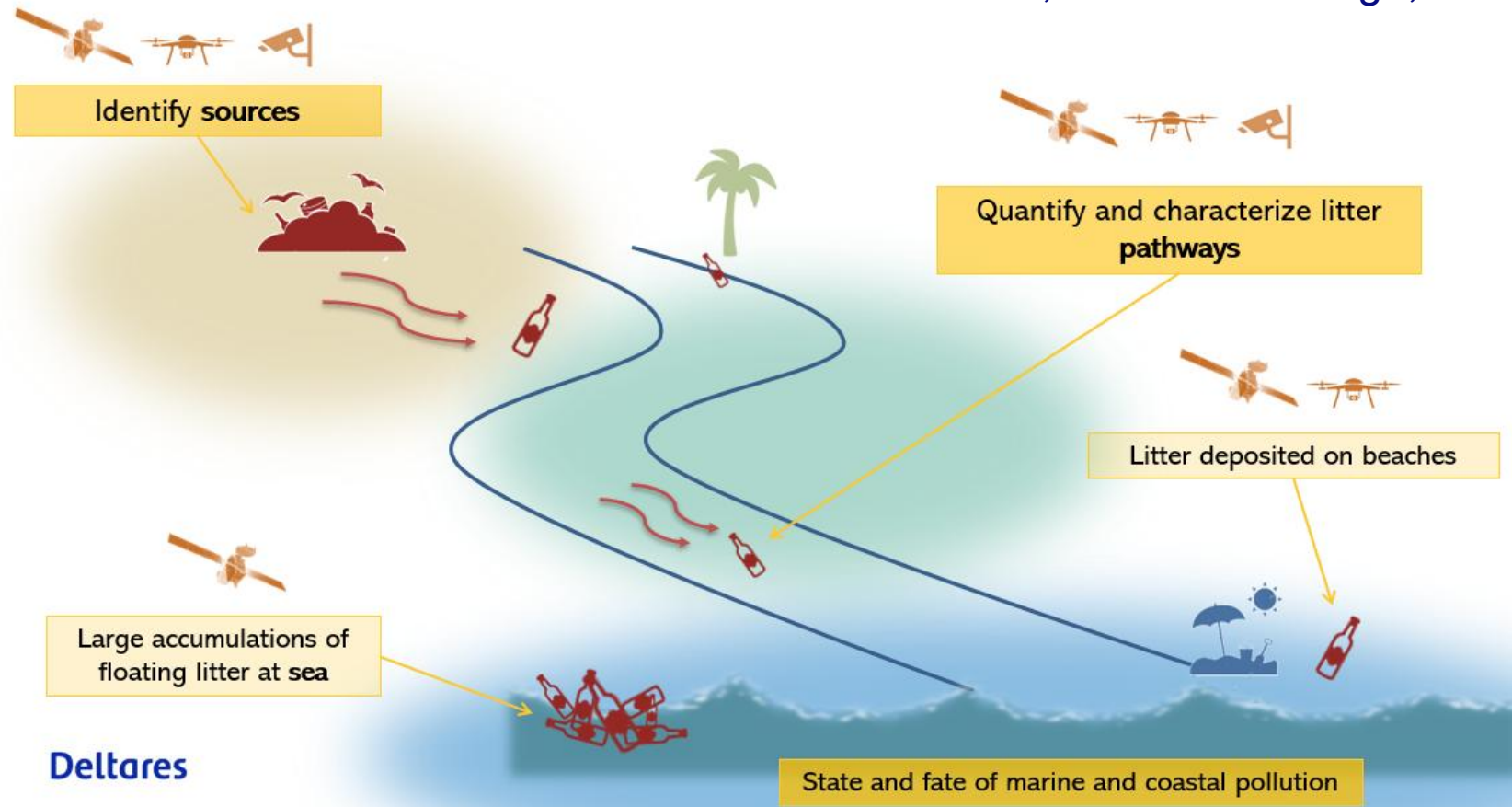


MOONSHOT 3: A resilient and healthy water supply for people and nature in 2030

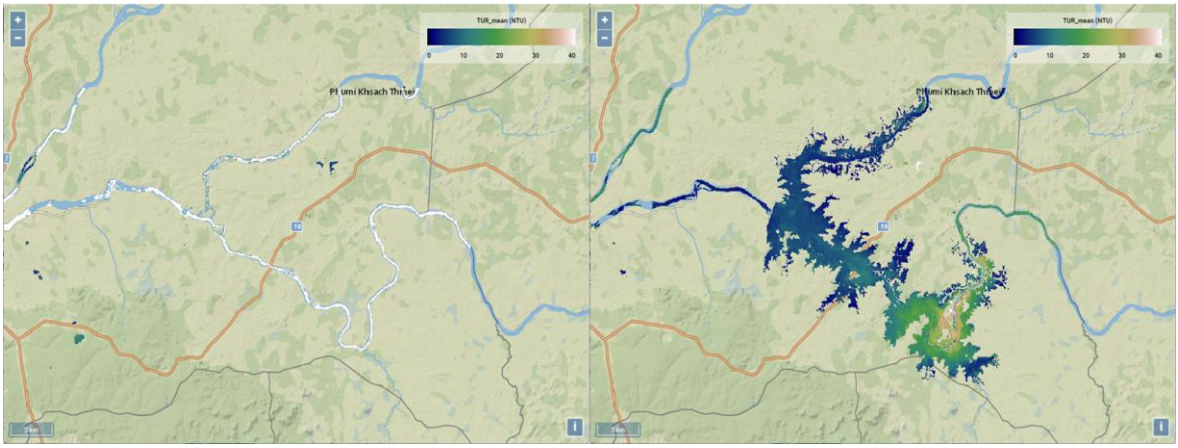
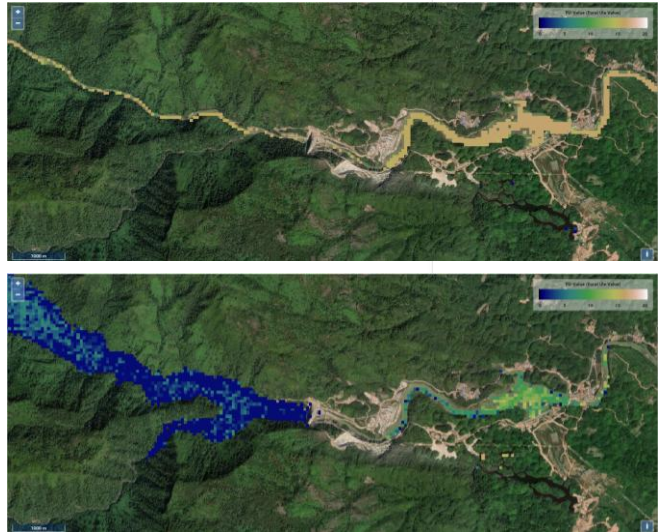
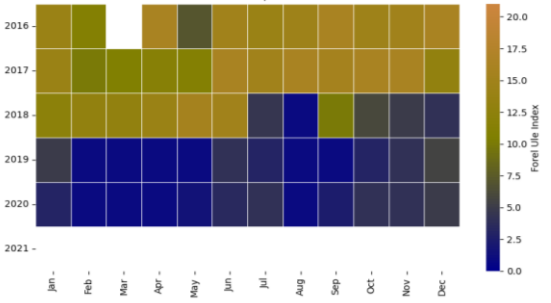


Plastics zoeken met satellieten





Biodiversity



VEELD
VERKEN
VOORSPEL

Vegetatie Monitor

Kaartlagen

- Kadaster
- Vegetatielegger
- Classificatie vs Legger
- Classificatie
- Satelliet beelden
- Luchtfoto

Search

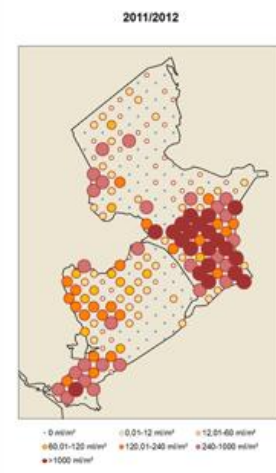
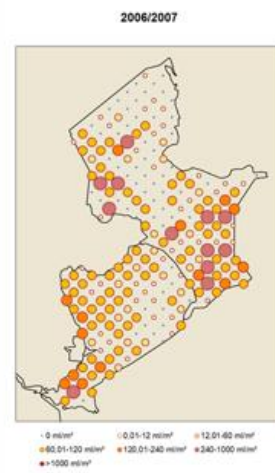
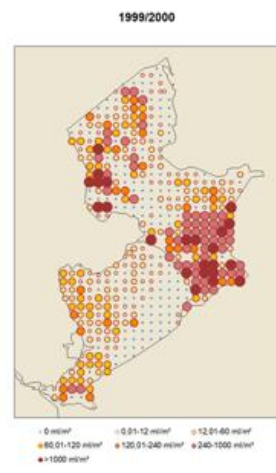
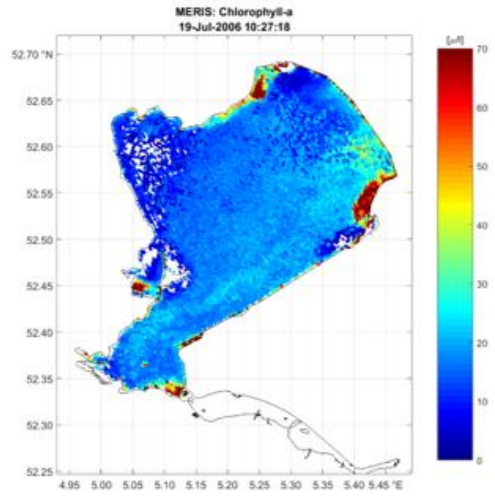
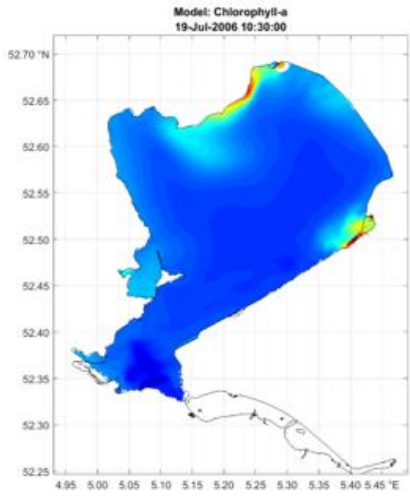
Satelliet beelden

2020 2022 2024

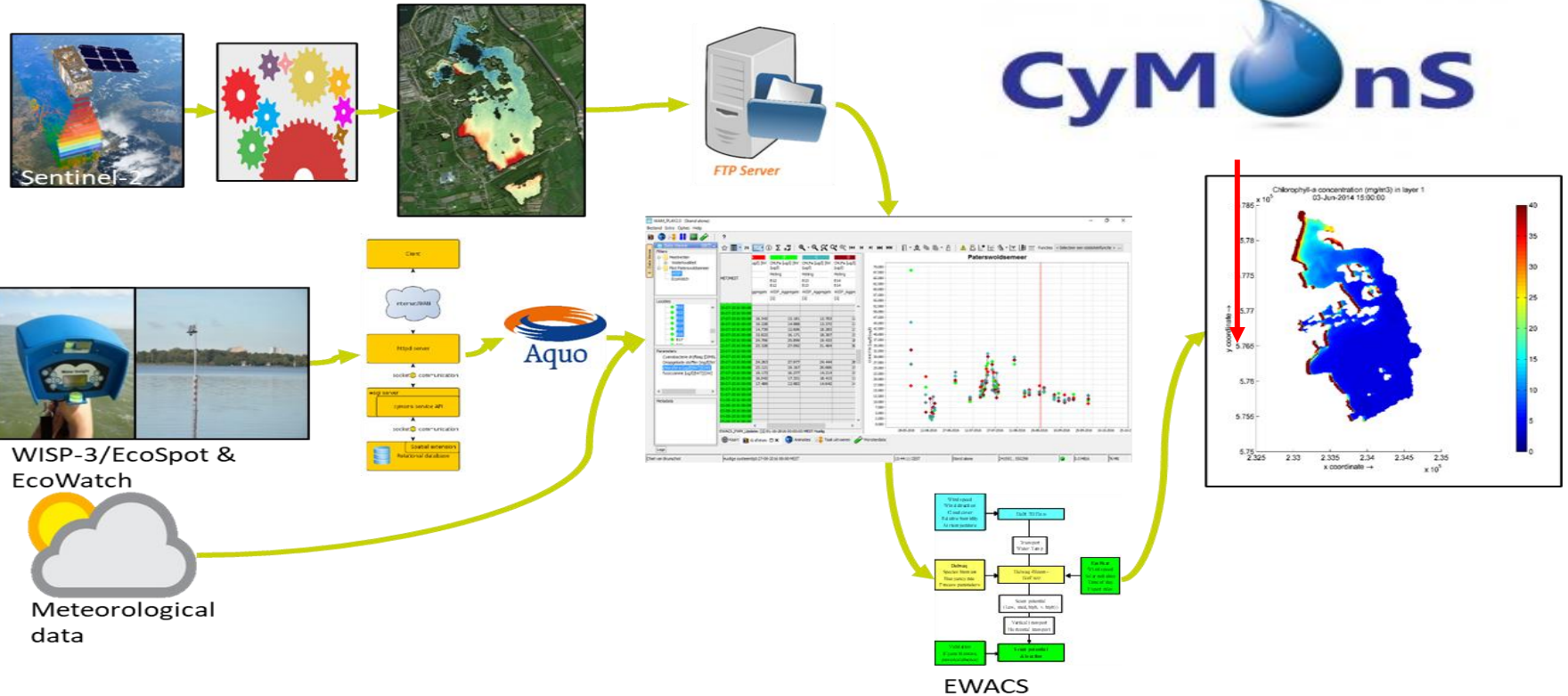
HUIDIGE MODUS: JAAR. CLIK HIER OM TE SWITCHEN VAN TIJDSMODUS.

Huidige beeld: jaarkaart 2023

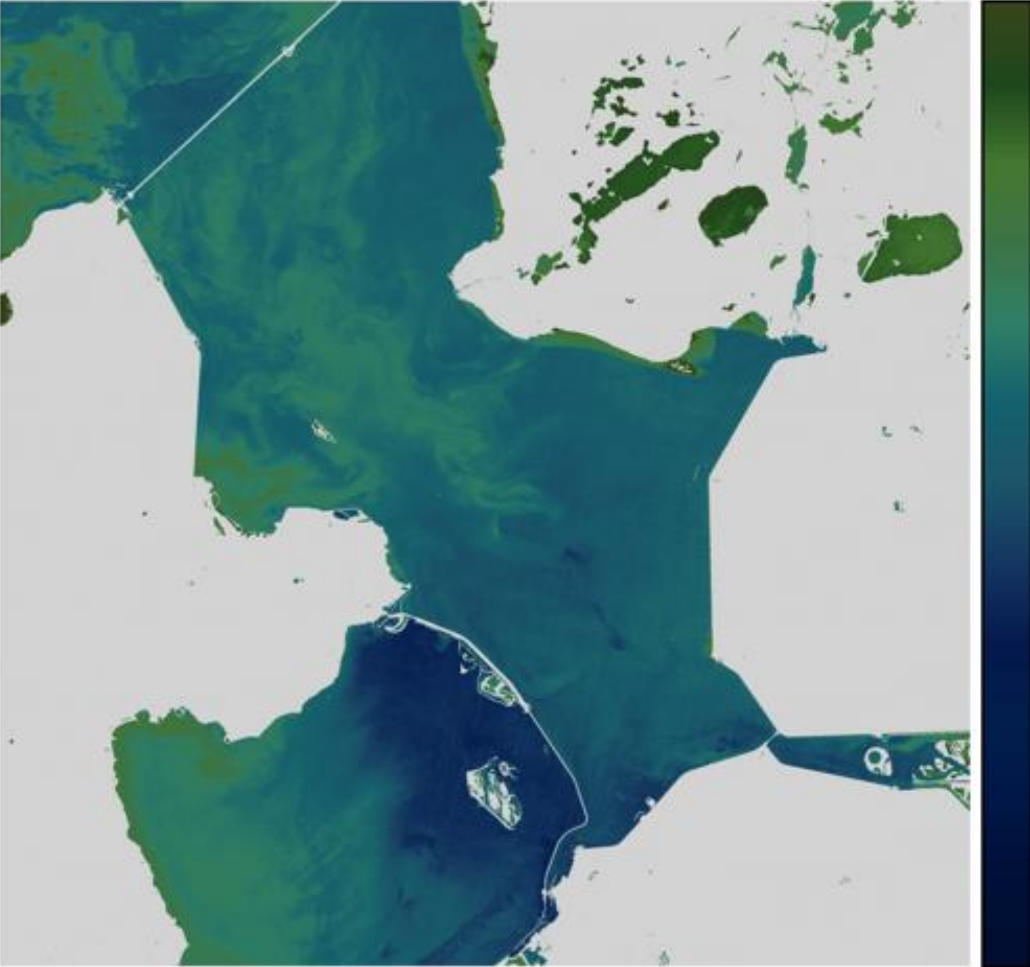
RWS



Delft-FEWS

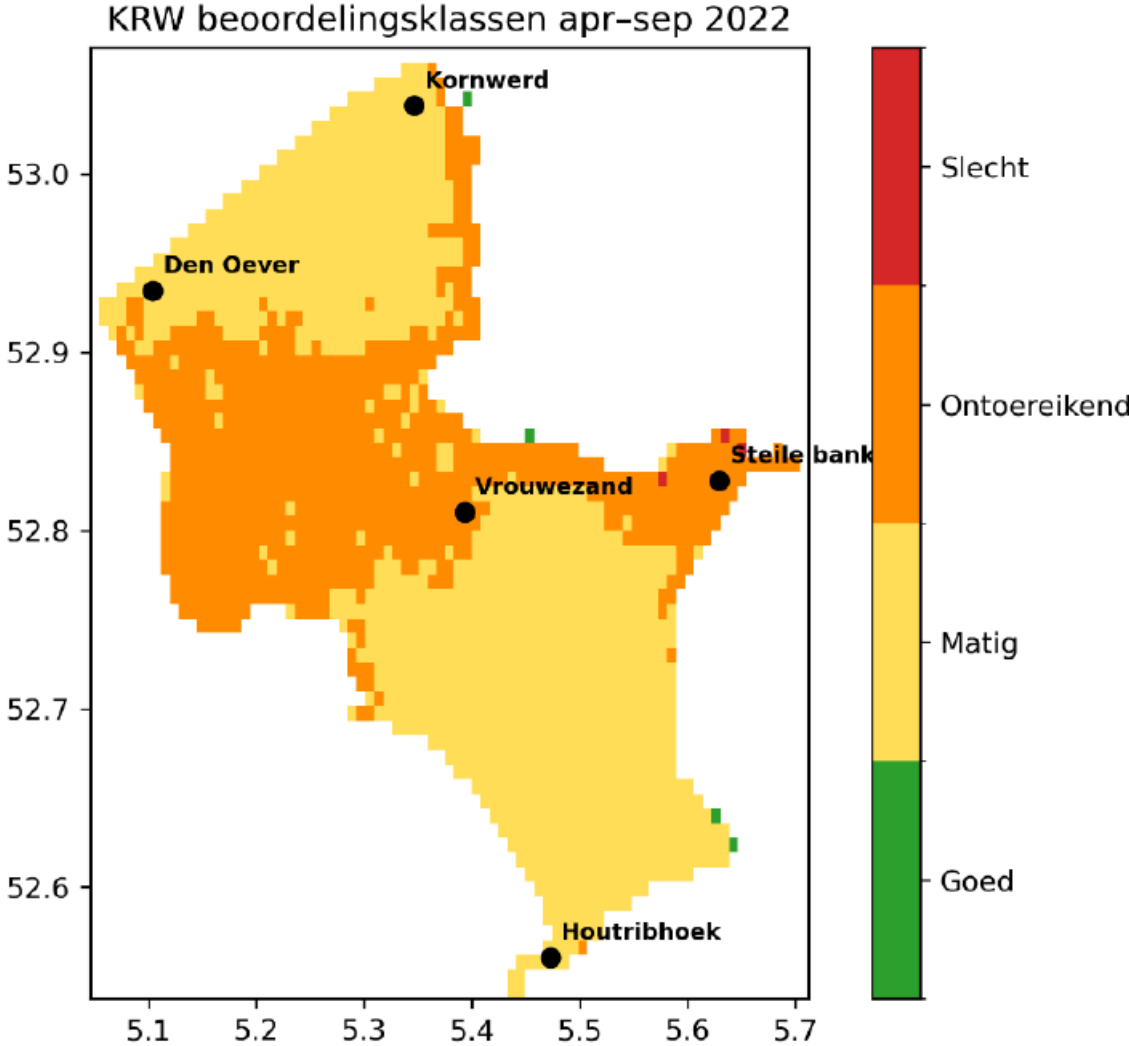


Interessant voor dagelijks beheer en KRW



Deltares

Eleveld, 2025. Deltares.



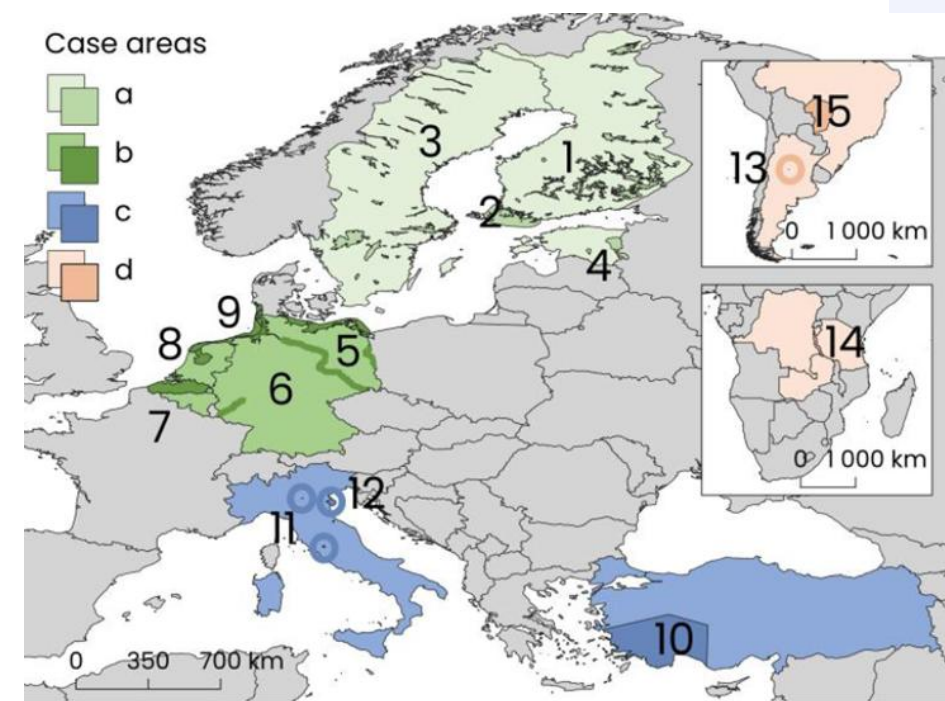
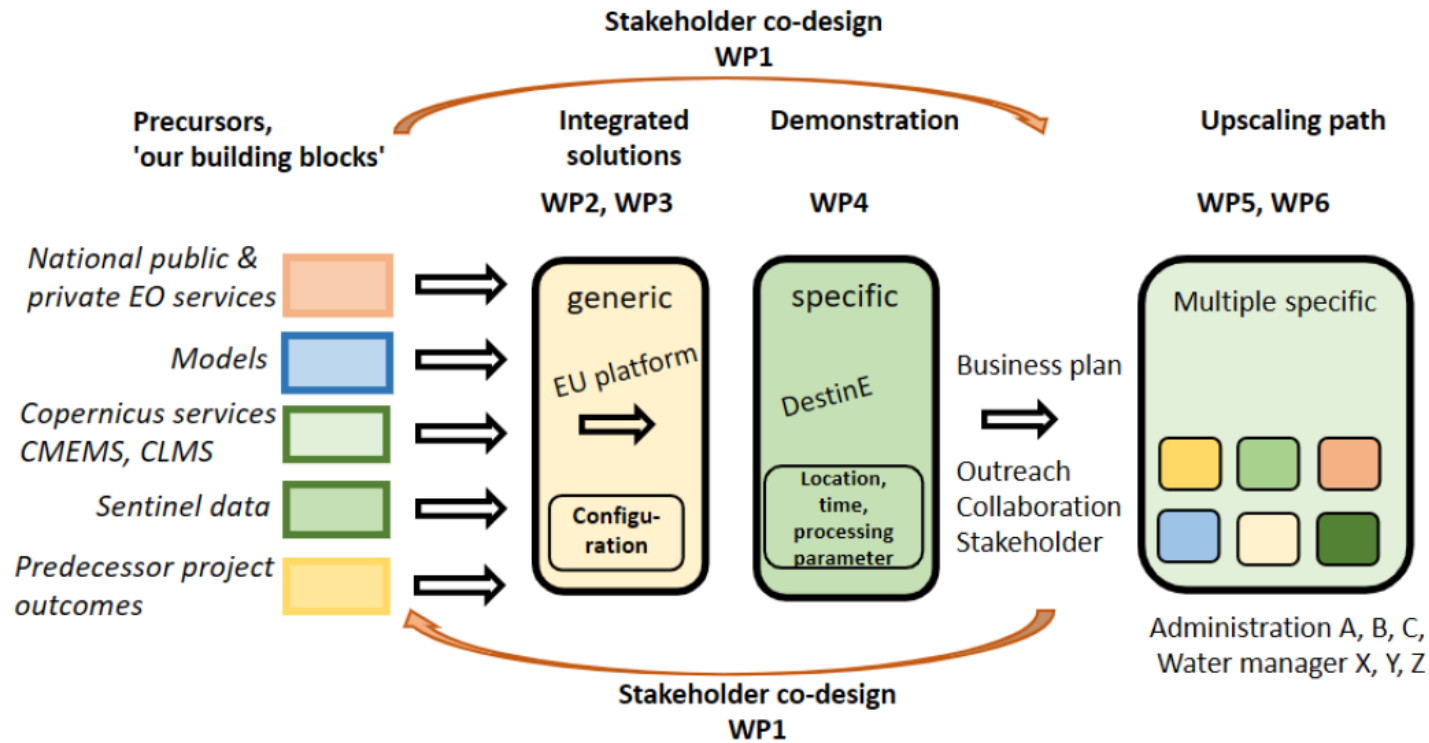
Dionisio Pires e.a. 2025. Deltares.

OASIS - GEO

Lead Modelling Tasks

Co-lead WP4 Integrated solutions

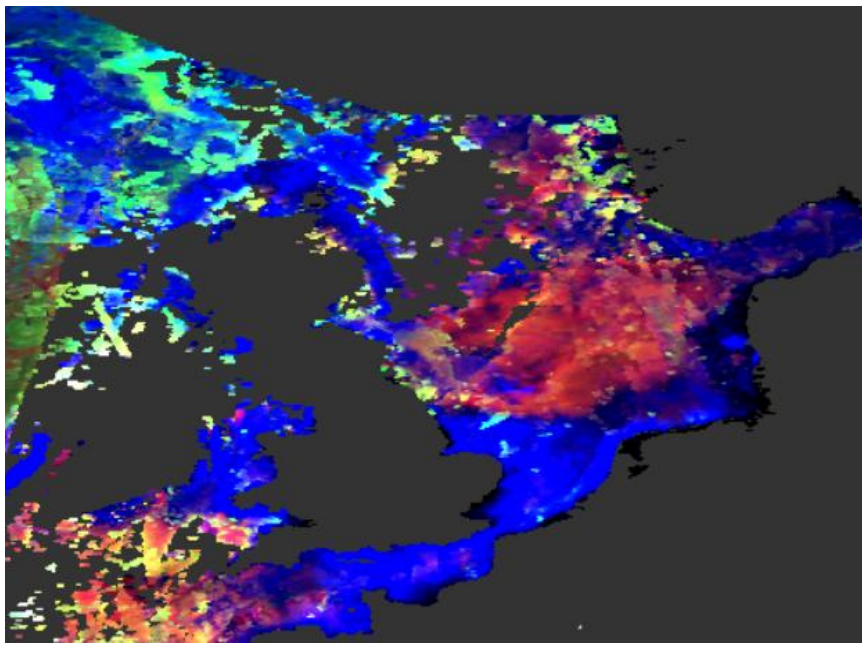
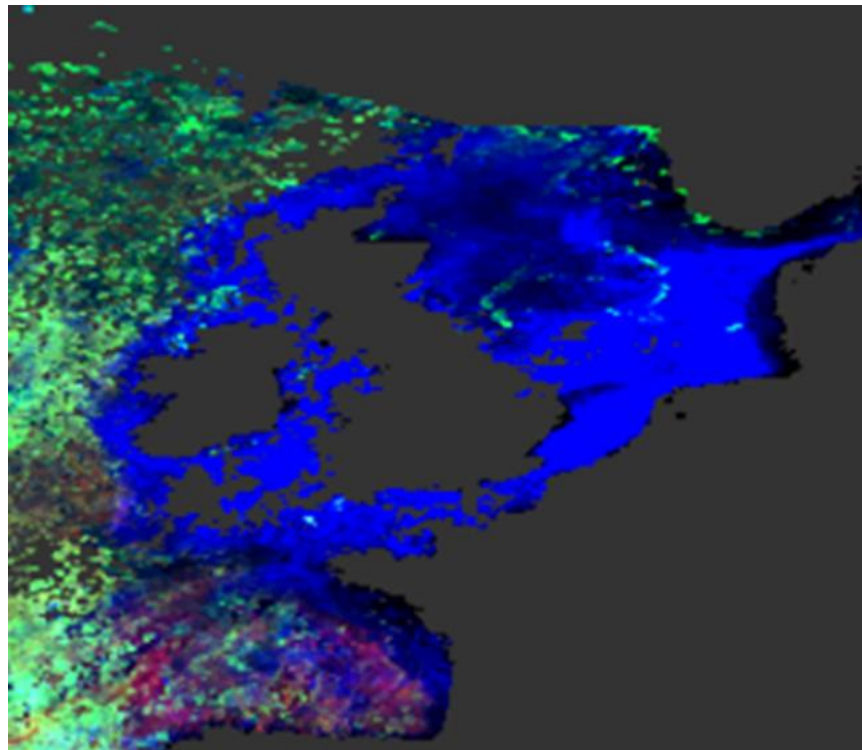
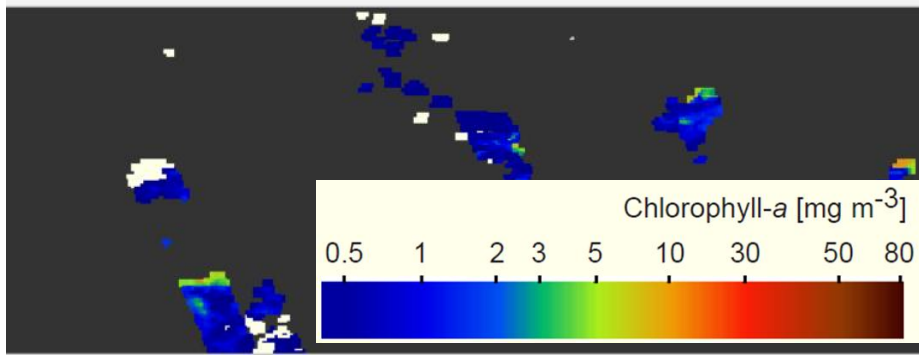
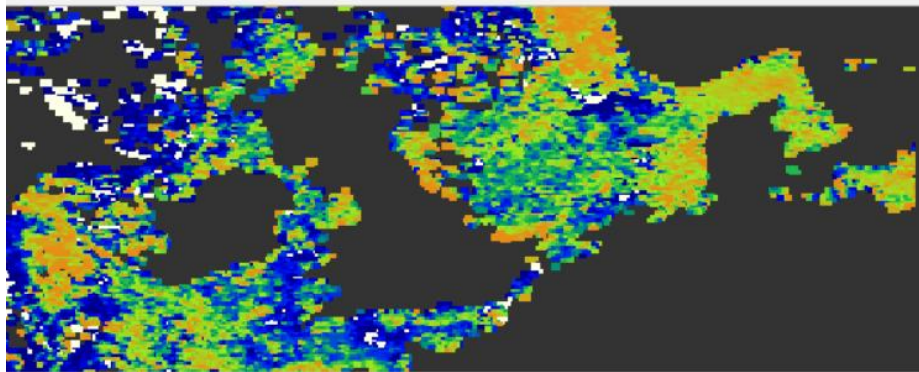
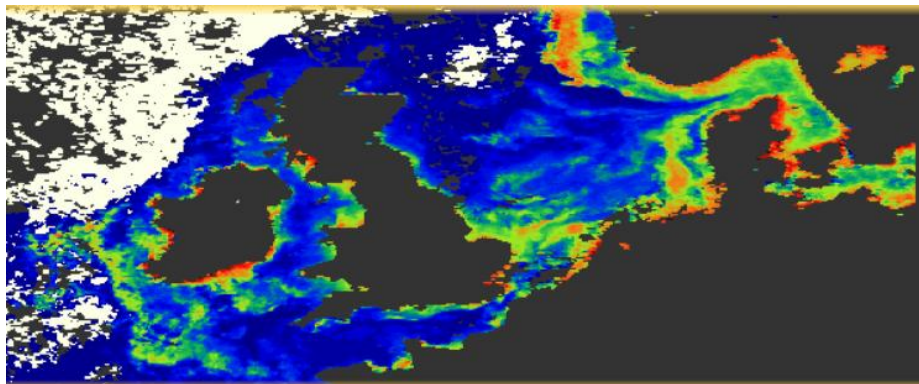
EO, Modelling, and AI driven solution for several case areas



- Expert**
- Env. manager**
- Policy maker**

New sensors PACE

Marieke Eleveld, 2025. Deltares



Hoe kunnen (de nieuwste) aardobservatietechnieken ons helpen om waterkwaliteitsbeheer in Nederland slimmer, sneller en effectiever te maken?

- Het gericht aanwijzen van locaties voor in-situ metingen – en waar nodig handhaving
- Het aanpakken van grensoverschrijdende waterkwaliteitskwesties
- Nieuwe input leveren voor toekomstige Kaderrichtlijn Water-rapportages
- Inzichten en extra (validatie) gegevens genereren voor waterkwaliteitsmodellen